

MINING EQUIPMENT LIQUIDATION

Due to a Voluntary Closure of

JOHNNY MOUNTAIN MINE

• NORTHWESTERN BRITISH COLUMBIA •

All Equipment Priced for Immediate Sale & Prepared For Removal

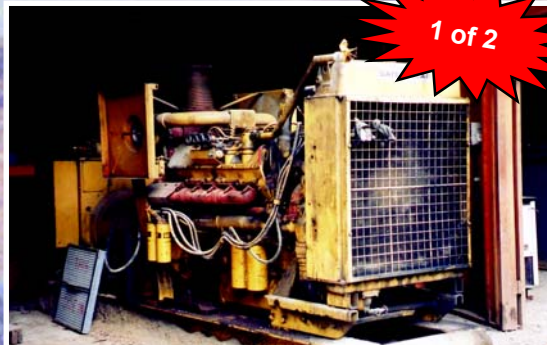
• Viewing by Appointment Only •

1 of 2



'87 Cat 3516 Genset

1 of 2



Cat 3412 Genset



Austin Western 25" x 40"
Jaw Crusher

GENSETS: '87 Cat 3516 STD, S/N 73Z00 221, c/w 1615 HP, 1204 KW, Kato Brushless AC Generator • '87 Cat 3516 STD, S/N 73Z00 220, 1322 HP, 986 KW, Kato Brushless AC Generator • '87 Cat 3512 STD, S/N 24Z01 893, 1636 HP, 1220 KW, Kato Revolving Brushless AC Field Generator • Cat 3412 TT, S/N 38S09446, Leroy Somer AC Generator • Cat 3412, S/N 38S5242, Leroy Somer Generator • **Simpower LSA 46 M5**, S/N MO35286/1 IP-21 •

CRUSHERS: Austin Western 25" x 40" Jaw, S/N 2540194, 100 HP, 600V • Symons 3 Ft Standard Cone, 00 HP, 600V, 1740 RPM •

BALL MILLS: Allis Chalmers 8' x 12' Ball Mill, 350 HP, 600 V, 1770 RPM, c/w starter, liners, feed chute, discharge trommel & oversize return device • Denver 8' x 8' Re grind Ball Mill, 300 HP, c/w pumps, cyclone, electronics •



Symons 3 FT Standard
Cone Crusher



'87 Cat 3512 Genset



Simpower LSA 46 M5 Genset



Allis Chalmers 8' x 12' Ball Mill



Denver 8' x 8' Re grind

Sale
Conducted
By



Tradewest
The Tradewest Group Limited

Tel: (604) 530-9351
Fax: (604) 530-0194
E-Mail: sales@tradewestsales.com
Website: www.tradewestsales.com

VIEWING BY APPOINTMENT ONLY



2- Wagner Scoop Trams



Wagner MT 413-30
Underground Dump Trucks



Atlas Copco Rotary
Screw Compressor

1 of 3

**CALL GUY GAUTHIER AT (604) 530-9351
FOR INFORMATION & APPOINTMENTS**

UNDERGROUND DUMP TRUCKS: '88 Wagner MT 413-30, S/N DE01P0238, p/w Deutz diesel • (2) '87 Wagner MT 413-30, S/N's DE01P0239, DB01P0253, p/w Deutz diesel •

SCOOP TRAMS: '87 Wagner ST 3-1/2, S/N DOAHP0571, p/w Deutz diesel • Wagner ST2D, S/N 144-78, p/w Deutz 4 cyl. diesel, 4 spd. • Wagner ST2B, S/N 102-72, p/w Deutz diesel • '89 JS-220, S/N 844WCWF5L413FRLO •

COMPRESSORS: '86 Atlas Copco GA1209 Pack rotary screw, S/N 855862, 800 cfm • '86 Atlas Copco GA1109 Pack rotary screw, S/N 866371, 650 cfm • '86 Atlas Copco GA809 Pack rotary screw, S/N 866349, 450 cfm •

ROLLING STOCK: Cat D8L Crawler Tractor, c/w SS ripper, 7,500 hrs • Cat 235 Longstick Excavator, c/w 7,453 hrs • Cat 966D Wheel Loader, S/N 99Y01829, c/w forks, 7,884 hrs • '89 Kenworth C500B 6x6, S/N 2NKCLBOX7KM922458, p/w Cat 3406, 425 HP, c/w Dell 16 yd box, '89 Atlas AK4006B-72 crane • And More...
*Note: Some Rolling Stock will be needed for mine reclamation.



Cat D8L Crawler Tractor



'89 Kenworth C500B 6x6
Dump Truck

**VISIT
TRADEWESTSALES.COM
FOR ALL
UPCOMING
AUCTIONS &
LIQUIDATIONS**



Cat 966D Wheel Loader



Cat 235 Longstick Excavator

**Sale
Conducted
By**



TRADEWEST
The Tradewest Group Limited

Tel: (604) 530-9351
Fax: (604) 530-0194
E- Mail: sales@tradewestsales.com
Website: www.tradewestsales.com
Printed in Canada